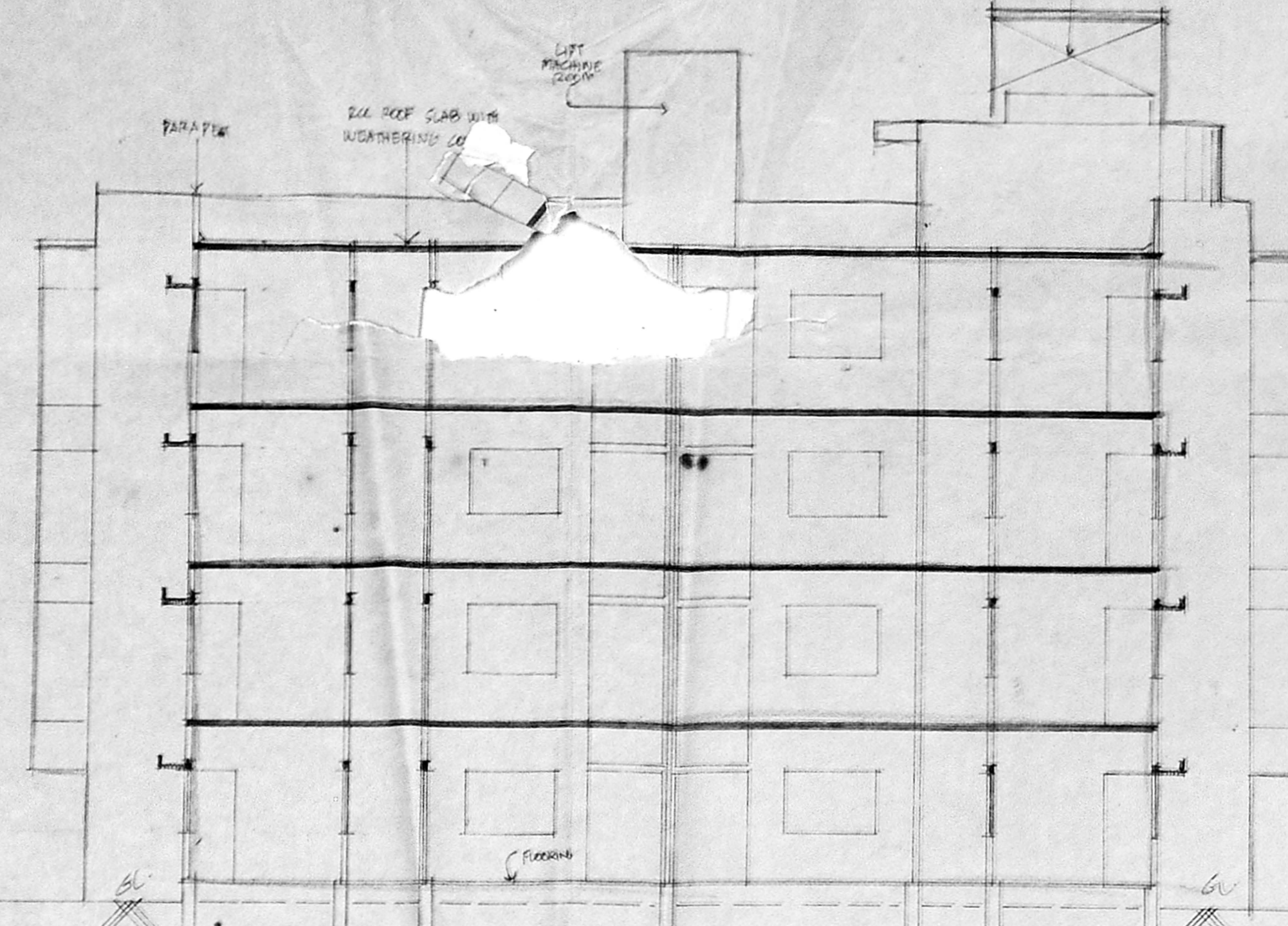
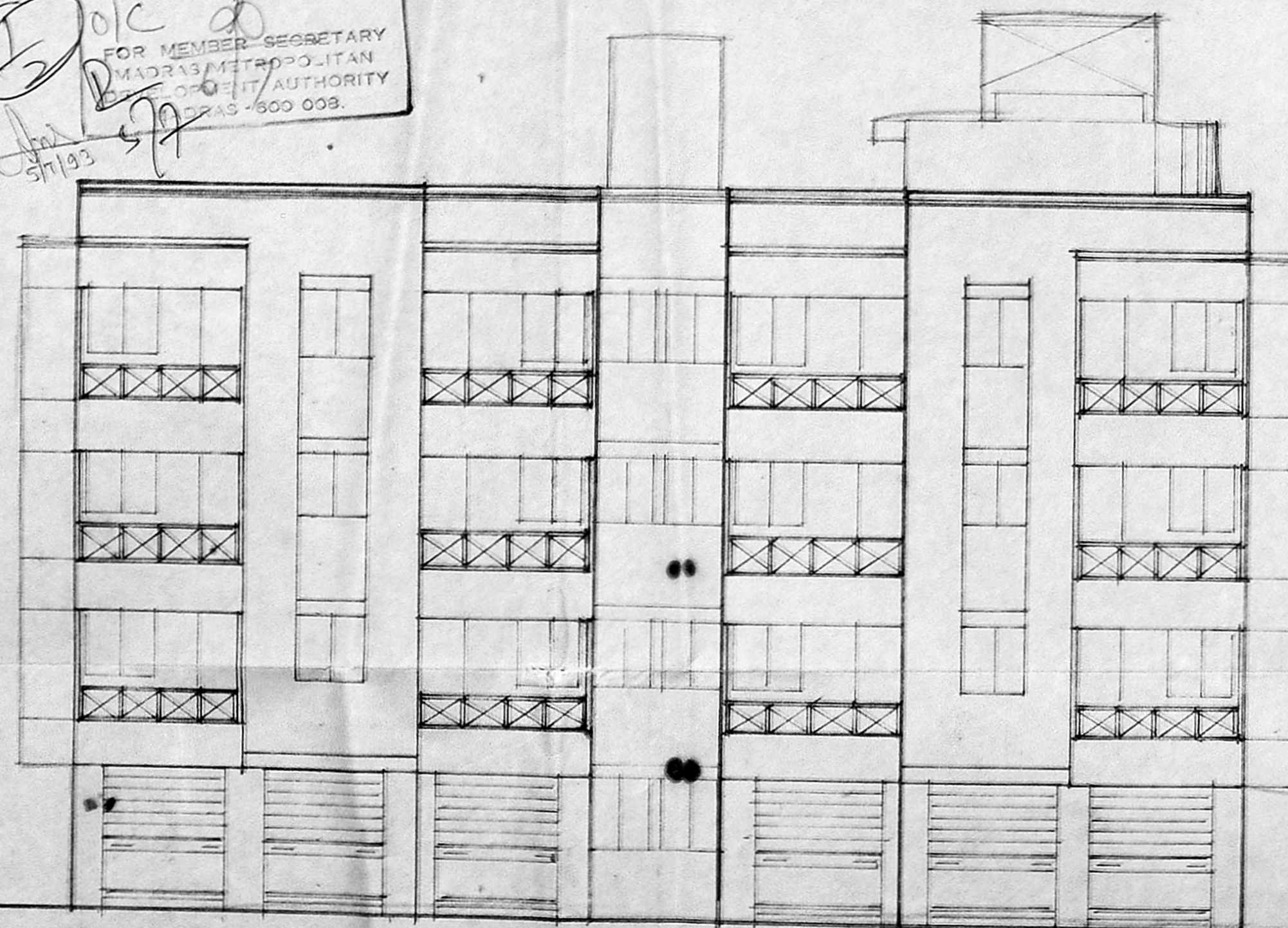


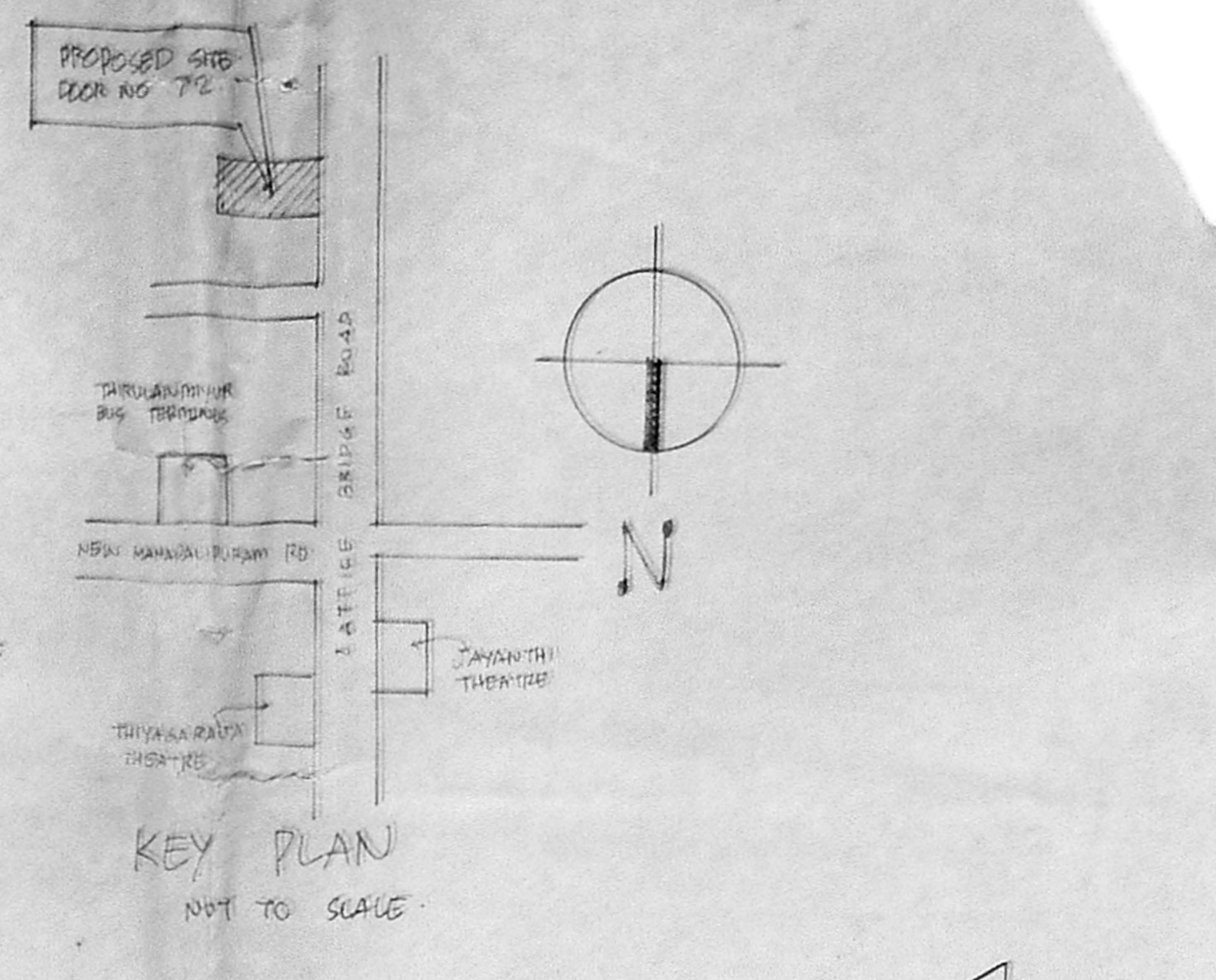
GROUND FLOOR PLAN



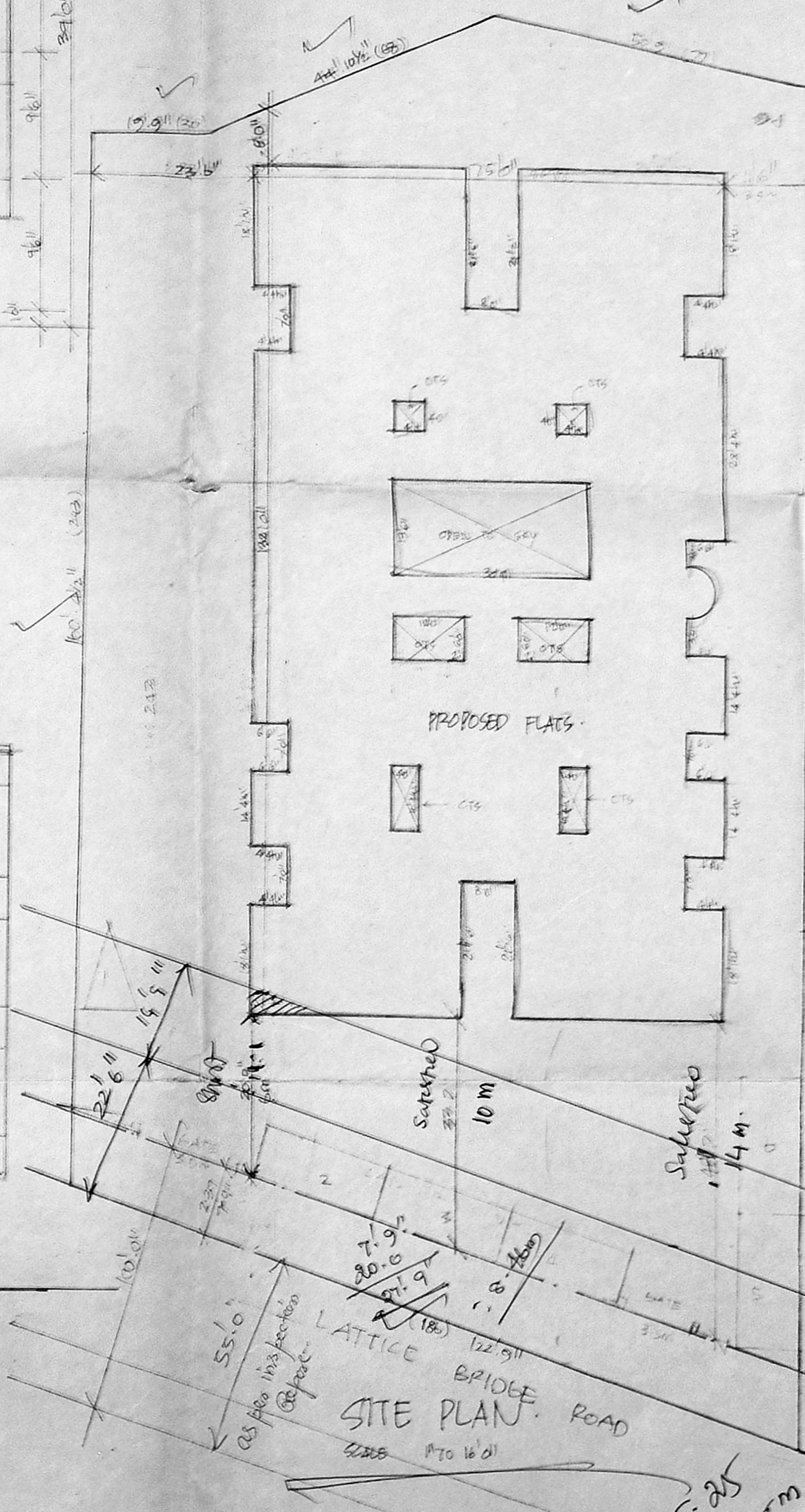
SECTION AT 'A-B'



ELEVATION



KEY PLAN NOT TO SCALE



SITE PLAN

Planning Permit No. P/16575/24/11/18/93
APPROVED
 SUBJECT TO THE CONDITIONS IN
 THE PERMIT
 No. 19/327/93 Date: 07-93
 FOR MEMBER SECRETARY
 MADRAS METROPOLITAN
 CORPORATION AUTHORITY
 245-400 008.

SCHEDULE OF WORK

D1	DOORS	MMDA 19/PP/NO. 25423/92
D2	WINDOWS	C.S.P.
D3	WALLS	...
W1	WINDERS	...
W2	WINDERS	...
W3	WINDERS	...
W4	WINDERS	...
V1	VENTILATORS	...

AREA DETAILS

TOTAL PLOT AREA	:
GROUND FLOOR AREA	:
FIRST FLOOR AREA	:
SECOND FLOOR AREA	:
THIRD FLOOR AREA	:
TOTAL PLINTH AREA	:
COVERAGE	:
F.C.I.	:

COLOUR INDEX

PROPOSALS	:
ROADS	:
BOUNDARY	:

PROPOSED RESIDENTIAL
 FLATS AT DOOR NO. 72
 NO. 72/8 OF
 THIRUVANMIYUR VILLAGE
 NO. 140 LATTICE BRIDGE
 ROAD, THIRUVANMIYUR
 MADRAS - 4

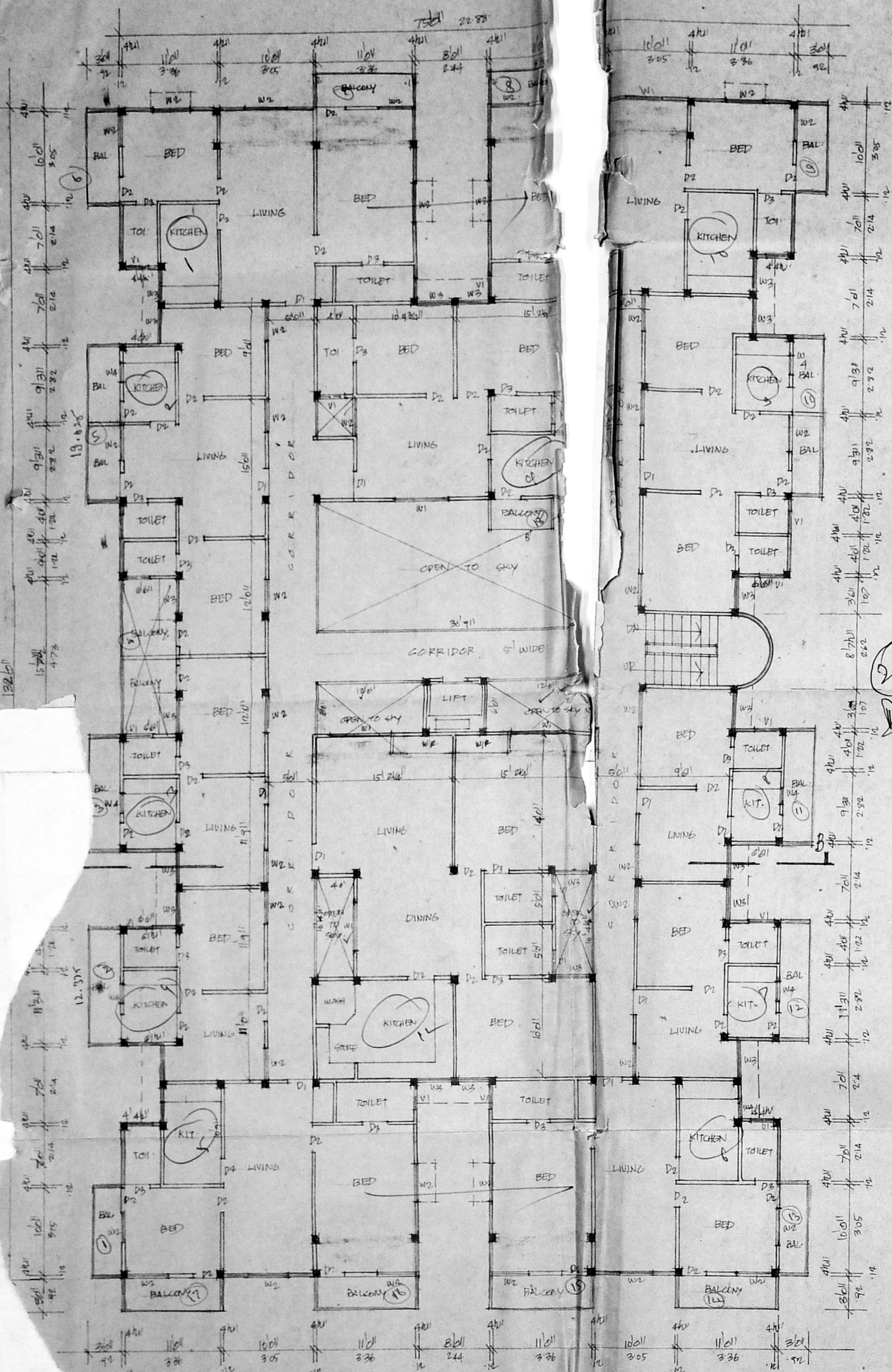
SCALE 1/100

M. Gauthamchandran
 OWNER

S. Swaipan
 S. DURAI PANDIAN
 B.E., A.M.I.E., F.I.C.I.,
 Chartered Engineer, Valuer, Industrial Consultant
 Licensed Surveyor, Corporation of Chennai
 14, 1st Floor, K. P. Colony, Chennai - 600 010.
 MADRAS - 500 010.

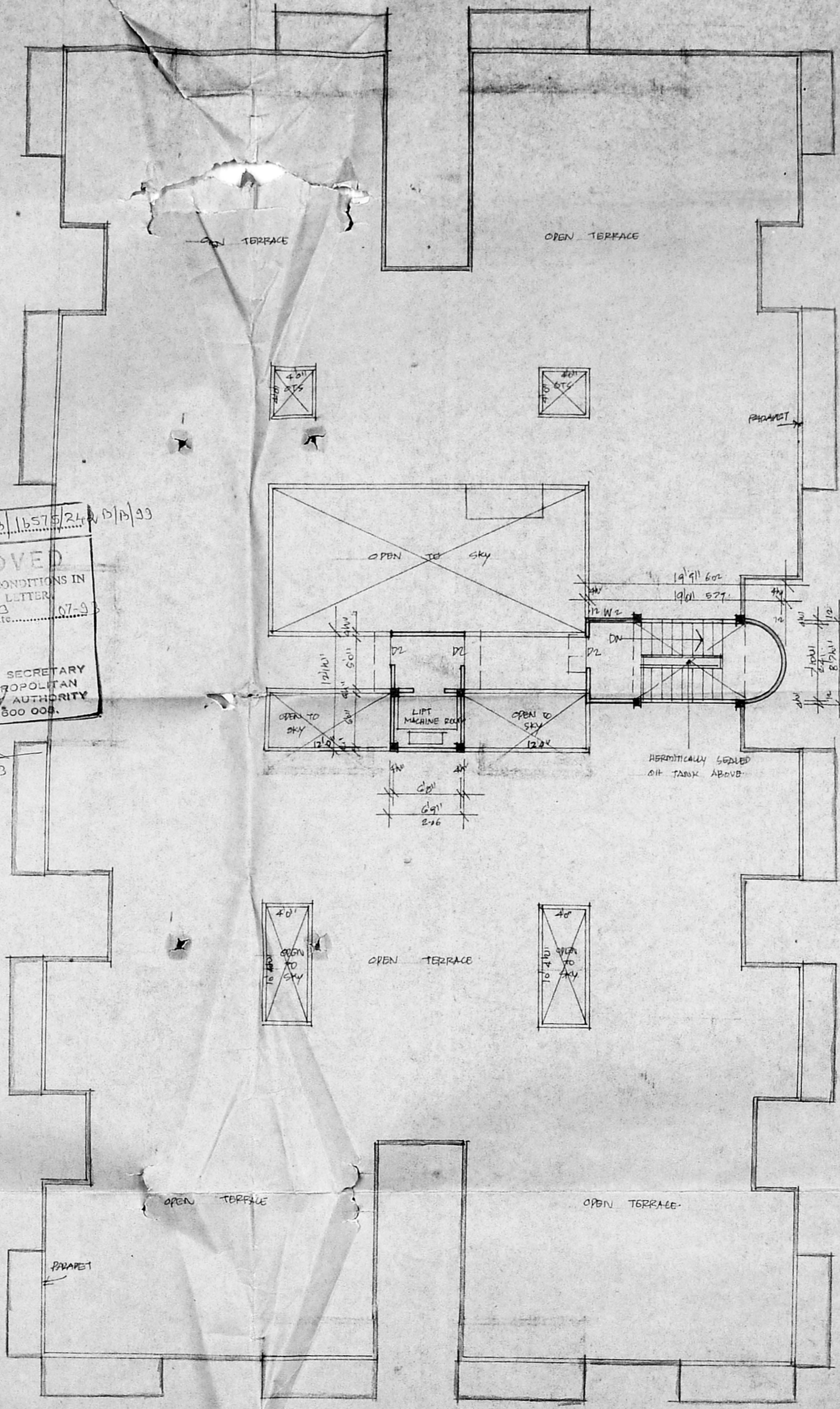
LICENSED SURVEYOR

MMDA B/PP NO. 25483/92	
D1	DOOR
D2	W.C.
D3	TOILET
W1	WINDOW
W2	WINDOW
W3	WINDOW
W4	WINDOW
W5	WINDOW
W6	WINDOW
W7	WINDOW
W8	WINDOW
W9	WINDOW
W10	WINDOW
W11	WINDOW
W12	WINDOW
W13	WINDOW
W14	WINDOW
W15	WINDOW
W16	WINDOW
W17	WINDOW
W18	WINDOW
W19	WINDOW
W20	WINDOW
W21	WINDOW
W22	WINDOW
W23	WINDOW
W24	WINDOW
W25	WINDOW
W26	WINDOW
W27	WINDOW
W28	WINDOW
W29	WINDOW
W30	WINDOW
W31	WINDOW
W32	WINDOW
W33	WINDOW
W34	WINDOW
W35	WINDOW
W36	WINDOW
W37	WINDOW
W38	WINDOW
W39	WINDOW
W40	WINDOW
W41	WINDOW
W42	WINDOW
W43	WINDOW
W44	WINDOW
W45	WINDOW
W46	WINDOW
W47	WINDOW
W48	WINDOW
W49	WINDOW
W50	WINDOW
W51	WINDOW
W52	WINDOW
W53	WINDOW
W54	WINDOW
W55	WINDOW
W56	WINDOW
W57	WINDOW
W58	WINDOW
W59	WINDOW
W60	WINDOW
W61	WINDOW
W62	WINDOW
W63	WINDOW
W64	WINDOW
W65	WINDOW
W66	WINDOW
W67	WINDOW
W68	WINDOW
W69	WINDOW
W70	WINDOW
W71	WINDOW
W72	WINDOW
W73	WINDOW
W74	WINDOW
W75	WINDOW
W76	WINDOW
W77	WINDOW
W78	WINDOW
W79	WINDOW
W80	WINDOW
W81	WINDOW
W82	WINDOW
W83	WINDOW
W84	WINDOW
W85	WINDOW
W86	WINDOW
W87	WINDOW
W88	WINDOW
W89	WINDOW
W90	WINDOW
W91	WINDOW
W92	WINDOW
W93	WINDOW
W94	WINDOW
W95	WINDOW
W96	WINDOW
W97	WINDOW
W98	WINDOW
W99	WINDOW
W100	WINDOW

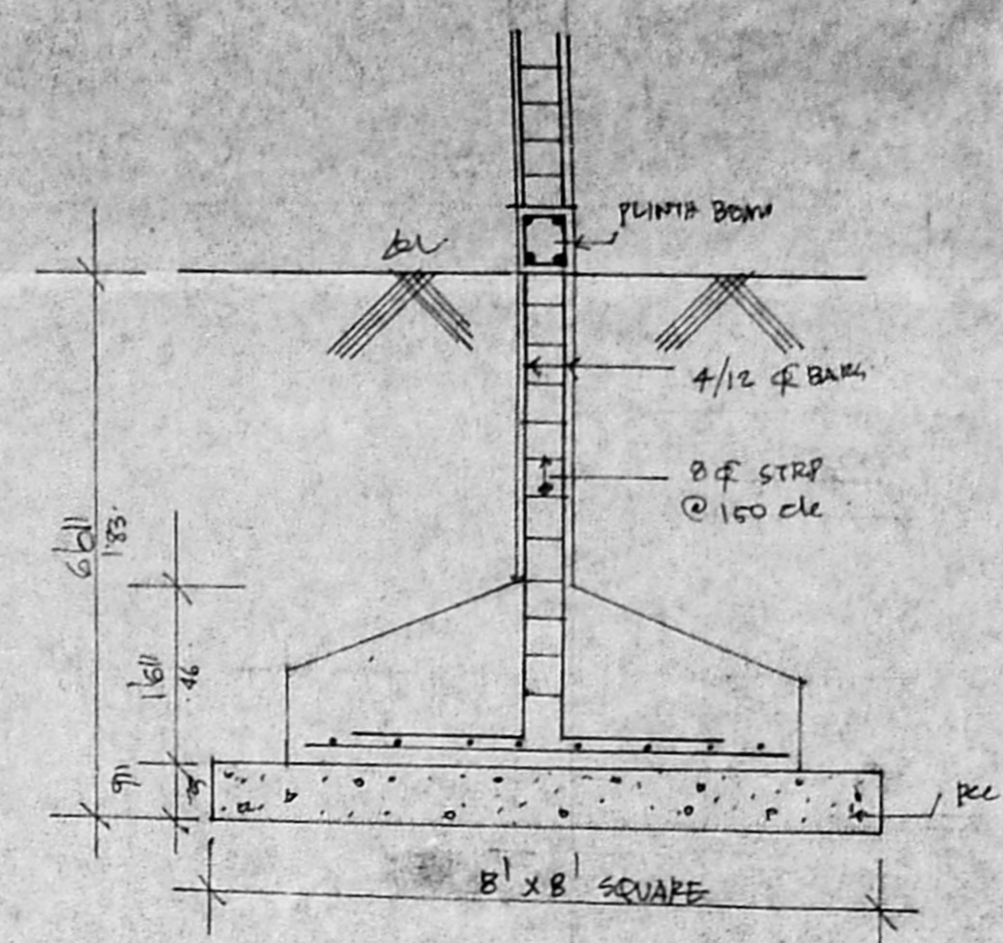


TYPICAL FIRST, SECOND & THIRD FLOOR PLAN. 12x13/36

Planning Permit No. 16575/24/15/13/93
APPROVED
 SUBJECT TO THE CONDITIONS IN THIS OFFICE LETTER.
 No. 12327/93 Date: 07.03.93
 FOR MEMBER SECRETARY
 MADRAS METROPOLITAN DEVELOPMENT AUTHORITY
 MADRAS 600 009.



TERRACE PLAN



COLUMN FOUNDATION DETAILS

AREA DETAILS

TOTAL PLOT AREA	: 48 CENTS
GROUND FLOOR AREA	: 8515 SQ-FT
FIRST FLOOR AREA	: 9335 " "
SECOND FLOOR AREA	: 9335 " "
THIRD FLOOR AREA	: 9335 " "
TOTAL PUNTH AREA	: 36,520 SQ-FT
COVERAGE	44%
FSR	1.74

COLOUR INDEX

PROPOSALS	:
ROADS	:
BOUNDARY	:

PROPOSED RESIDENTIAL FLATS AT DOOR NO 72, S. NO 72/8 OF THIRUVANMIYUR VILLAGE NO 140, LATTICE BRIDGE ROAD, THIRUVANMIYUR MADRAS-41.

SCALE 1" TO 30'

OWNER: M. Gauthamchand

S. Durairaj & DURAI PANDIAN, B.E., A.M.I.E., P.E., ARCH.
 Chartered Engineer, Valuer, Industrial Consultant, Structural Architect, Furniture Engineer & Licensed Surveyor, Corporation of Madras, 14, St. Vincent Street, Madras, 600 009.
 LICENSED SURVEYOR